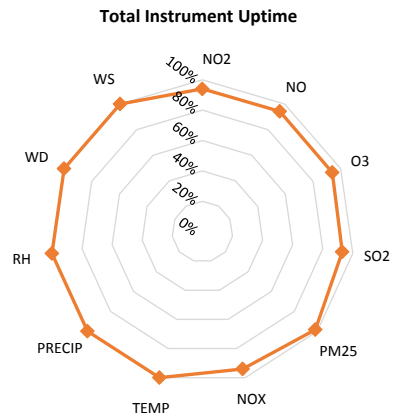
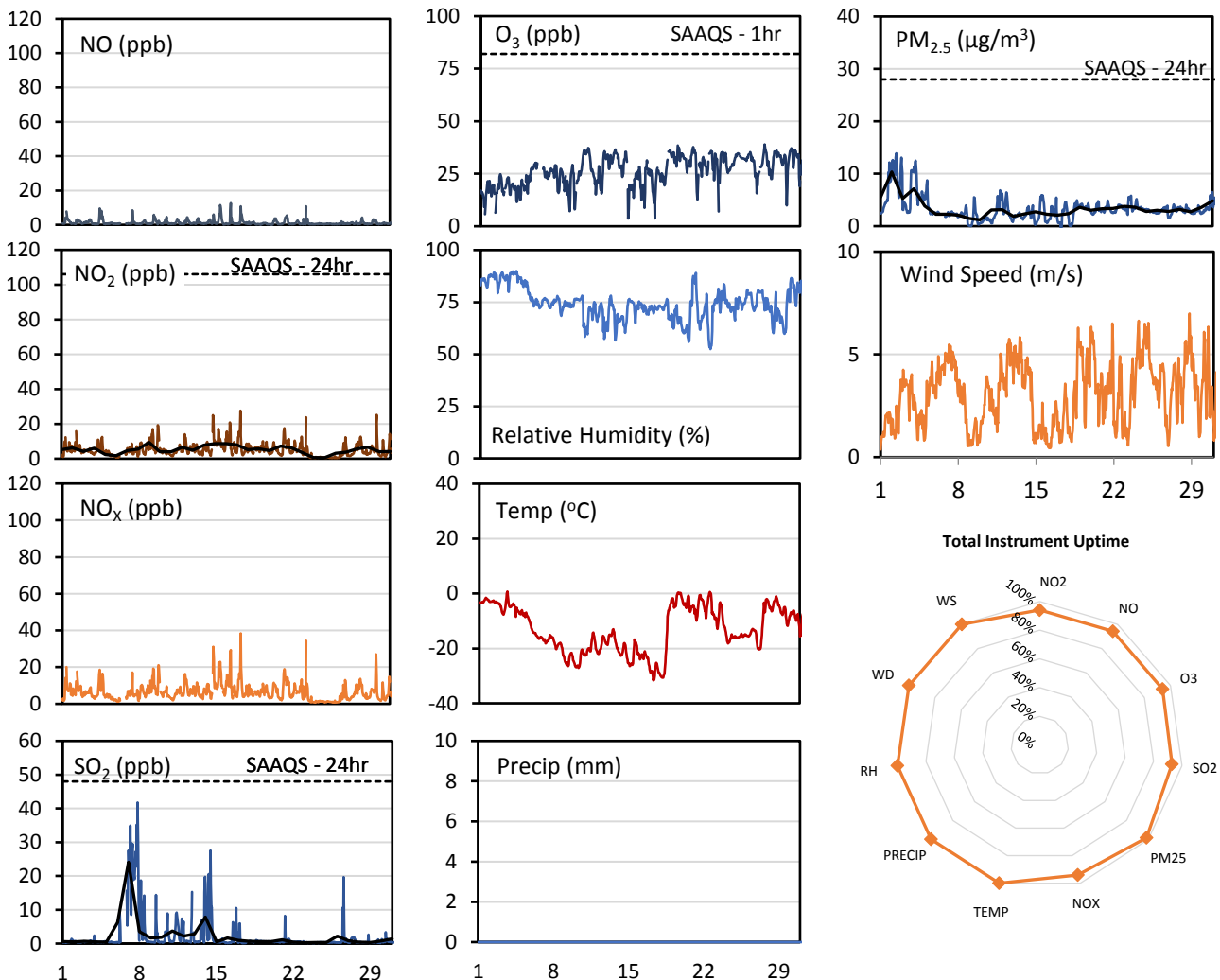
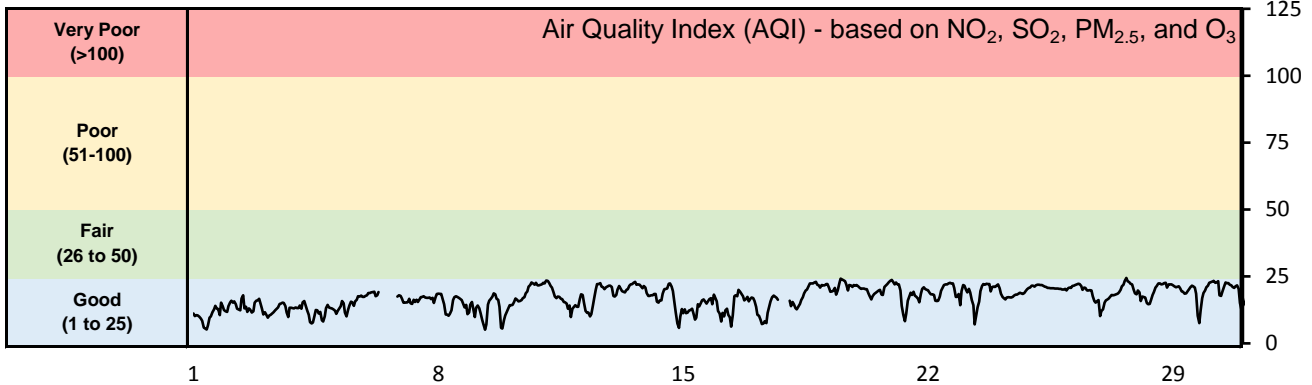


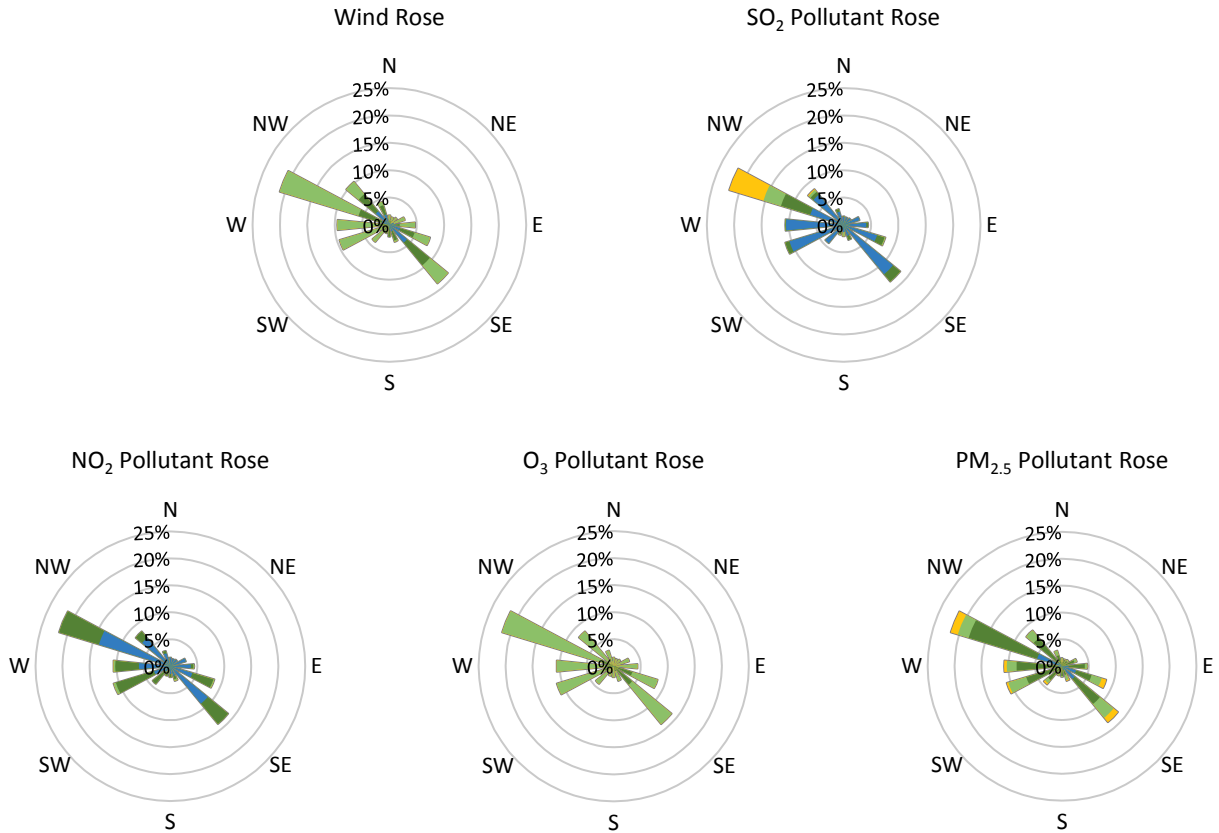
GPAZ East Regina Station - December 2016 Summary Report

Pollutants		Month Records		24-Hour Records				1-Hour Records			
Name	Conc. Unit	Avg. Conc.	Uptime	Maximum		SAAQS Standard	Exceed Days	Maximum		SAAQS Standard	Exceed Hours
				Conc.	Time			Conc.	Time		
NO	ppb	1.3	94%	2.8	Dec-15	-	-	12.6	Dec-16 10:00	-	-
NO ₂	ppb	5.2	94%	9.4	Dec-09	106	0	27.6	Dec-17 08:00	159	0
NO _x	ppb	6.5	94%	11.5	Dec-15	-	-	38.4	Dec-17 08:00	-	-
SO ₂	ppb	2.2	93%	24.1	Dec-07	48	0	41.8	Dec-07 20:00	172	0
O ₃	ppb	26.5	94%	33.7	Dec-19	-	-	39.0	Dec-27 16:00	82	0
PM _{2.5}	µg/m ³	3.4	98%	10.3	Dec-02	28	0	13.9	Dec-02 10:00	-	-

SAAQS: Saskatchewan Ambient Air Quality Standards



* colored lines indicate 1-hr concentration data for all parameters; solid black lines indicate 24-hr concentrations for PM_{2.5}, NO₂, and SO₂



Parameters	Unit	Color Code for Wind Speed and Pollution Concentration Class						
		0.3 ≤ WS < 1.4	1.4 ≤ WS < 3.1	3.1 ≤ WS < 7.8	7.8 ≤ WS < 10.8	10.8 ≤ WS < 13.6	WS ≥ 13.6	
SO ₂	ppb	0 ≤ C < 1	1 ≤ C < 5	5 ≤ C < 10	10 ≤ C < 57	57 ≤ C < 172	C ≥ 172	
NO ₂	ppb	0 ≤ C < 5	5 ≤ C < 15	15 ≤ C < 30	30 ≤ C < 100	100 ≤ C < 212	C ≥ 212	
O ₃	ppb	0 ≤ C < 10	10 ≤ C < 20	20 ≤ C < 40	40 ≤ C < 60	60 ≤ C < 82	C ≥ 82	
PM _{2.5}	µg/m ³	0 ≤ C < 2	2 ≤ C < 4	4 ≤ C < 10	10 ≤ C < 20	20 ≤ C < 30	C ≥ 30	

Monthly Update

- Achieved >98% of scheduled uptime for all parameters except SO₂ (97%)
- All compliance parameters are above 90% data validity
- Calibration performed December 8