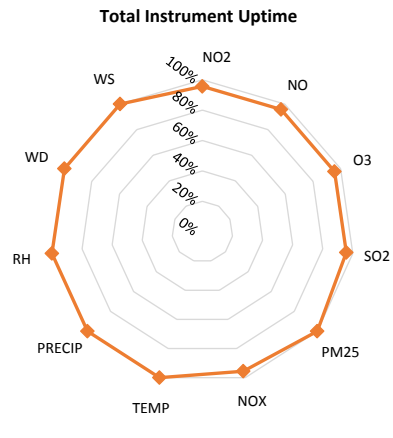
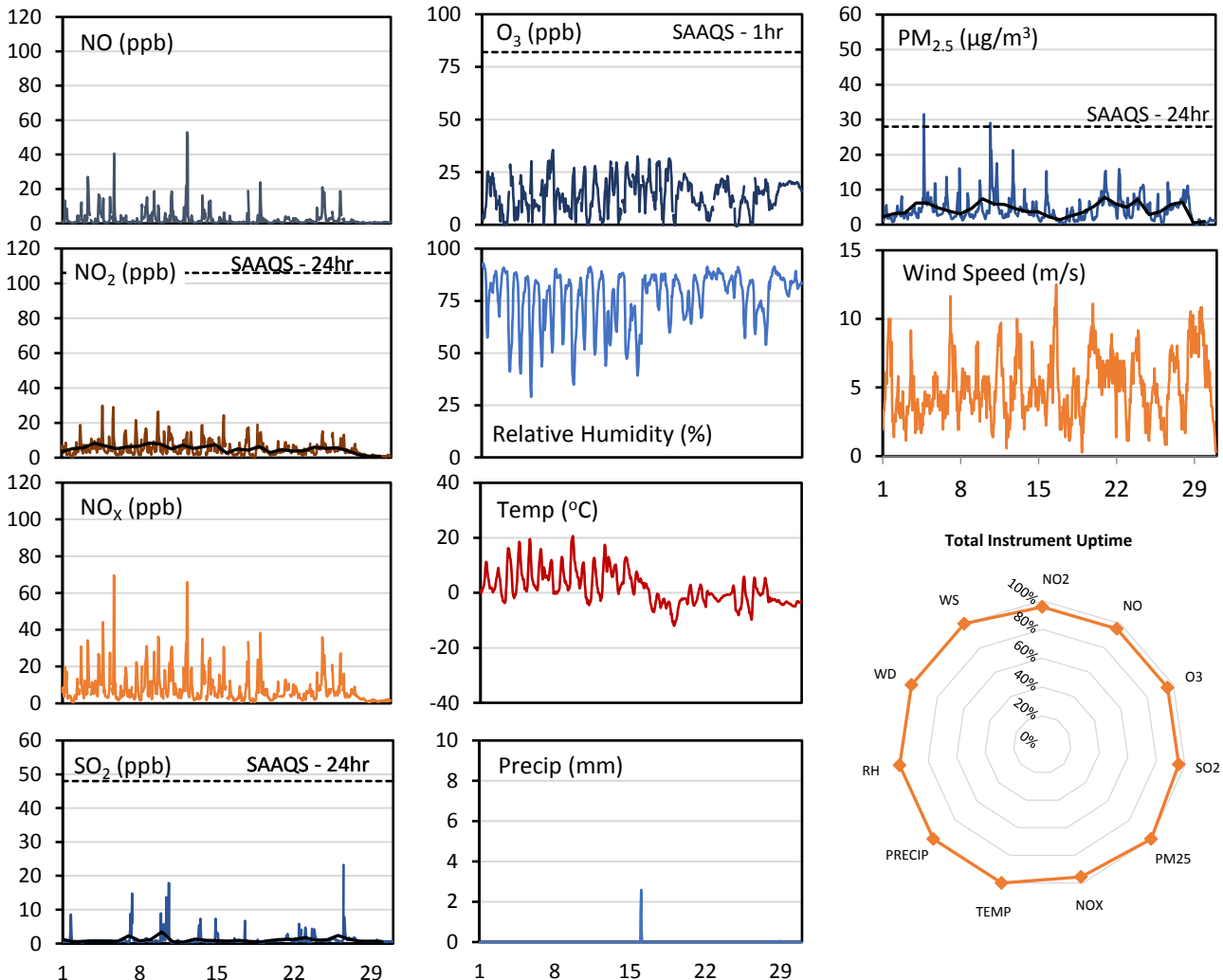
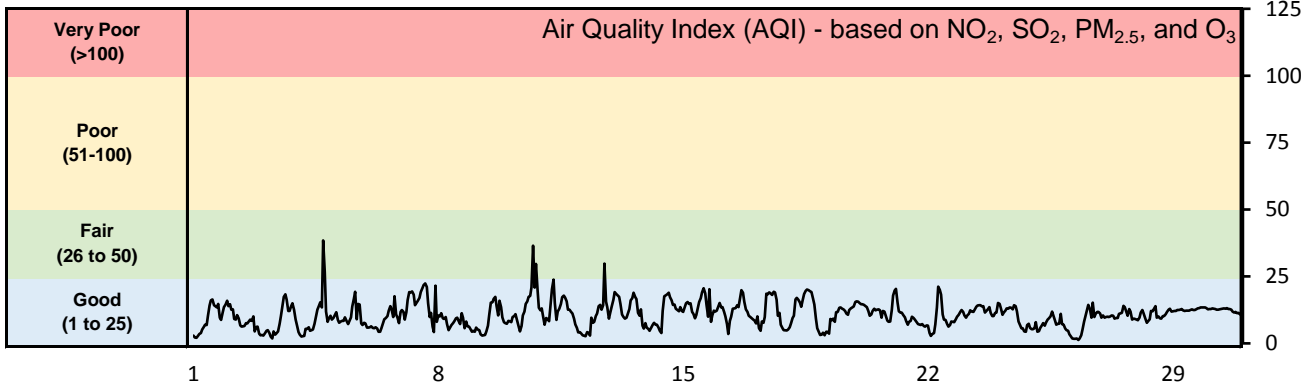


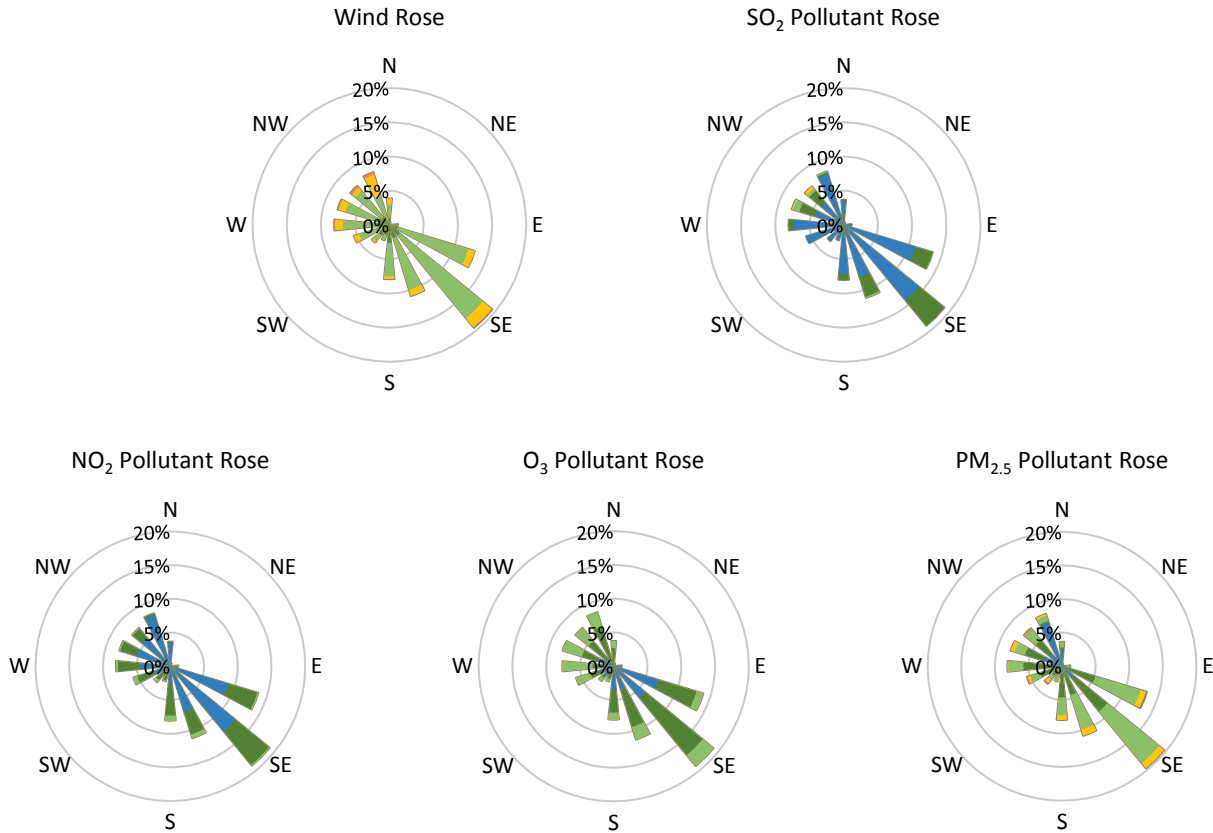
## GPAZ East Regina Station - November 2016 Summary Report

Pollutants		Month Records		24-Hour Records				1-Hour Records			
Name	Conc. Unit	Avg. Conc.	Uptime	Maximum		SAAQS Standard	Exceed Days	Maximum		SAAQS Standard	Exceed Hours
				Conc.	Time			Conc.	Time		
NO	ppb	2.6	96%	8.2	Nov-12	-	-	52.9	Nov-12 09:00	-	-
NO <sub>2</sub>	ppb	5.1	96%	8.4	Nov-09	106	0	29.8	Nov-04 17:00	159	0
NO <sub>x</sub>	ppb	7.7	96%	15.5	Nov-12	-	-	69.6	Nov-05 17:00	-	-
SO <sub>2</sub>	ppb	1.1	96%	3.4	Nov-10	48	0	23.2	Nov-26 12:00	172	0
O <sub>3</sub>	ppb	14.2	96%	21.7	Nov-07	-	-	35.5	Nov-07 15:00	82	0
PM <sub>2.5</sub>	µg/m <sup>3</sup>	4.3	100%	7.8	Nov-21	28	0	31.5	Nov-04 17:00	-	-

SAAQS: Saskatchewan Ambient Air Quality Standards



\* colored lines indicate 1-hr concentration data for all parameters; solid black lines indicate 24-hr concentrations for PM<sub>2.5</sub>, NO<sub>2</sub>, and SO<sub>2</sub>



Parameters	Unit	Color Code for Wind Speed and Pollution Concentration Class						
		$0.3 \leq WS < 1.4$	$1.4 \leq WS < 3.1$	$3.1 \leq WS < 7.8$	$7.8 \leq WS < 10.8$	$10.8 \leq WS < 13.6$	$WS \geq 13.6$	
SO <sub>2</sub>	ppb	$0 \leq C < 1$	$1 \leq C < 5$	$5 \leq C < 10$	$10 \leq C < 57$	$57 \leq C < 172$	$C \geq 172$	
NO <sub>2</sub>	ppb	$0 \leq C < 5$	$5 \leq C < 15$	$15 \leq C < 30$	$30 \leq C < 100$	$100 \leq C < 212$	$C \geq 212$	
O <sub>3</sub>	ppb	$0 \leq C < 10$	$10 \leq C < 20$	$20 \leq C < 40$	$40 \leq C < 60$	$60 \leq C < 82$	$C \geq 82$	
PM <sub>2.5</sub>	$\mu\text{g}/\text{m}^3$	$0 \leq C < 2$	$2 \leq C < 4$	$4 \leq C < 10$	$10 \leq C < 20$	$20 \leq C < 30$	$C \geq 30$	

**Monthly Update**

- Achieved 100% of scheduled uptime for all parameters
- Downtime of 4% results from daily internal zeroes and spans
- All compliance parameters are above 90% data validity
- Wind speed and direction taken from Regina Airport