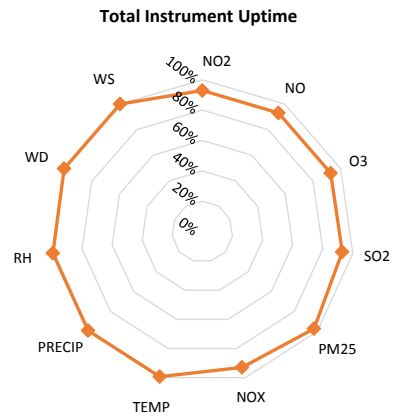
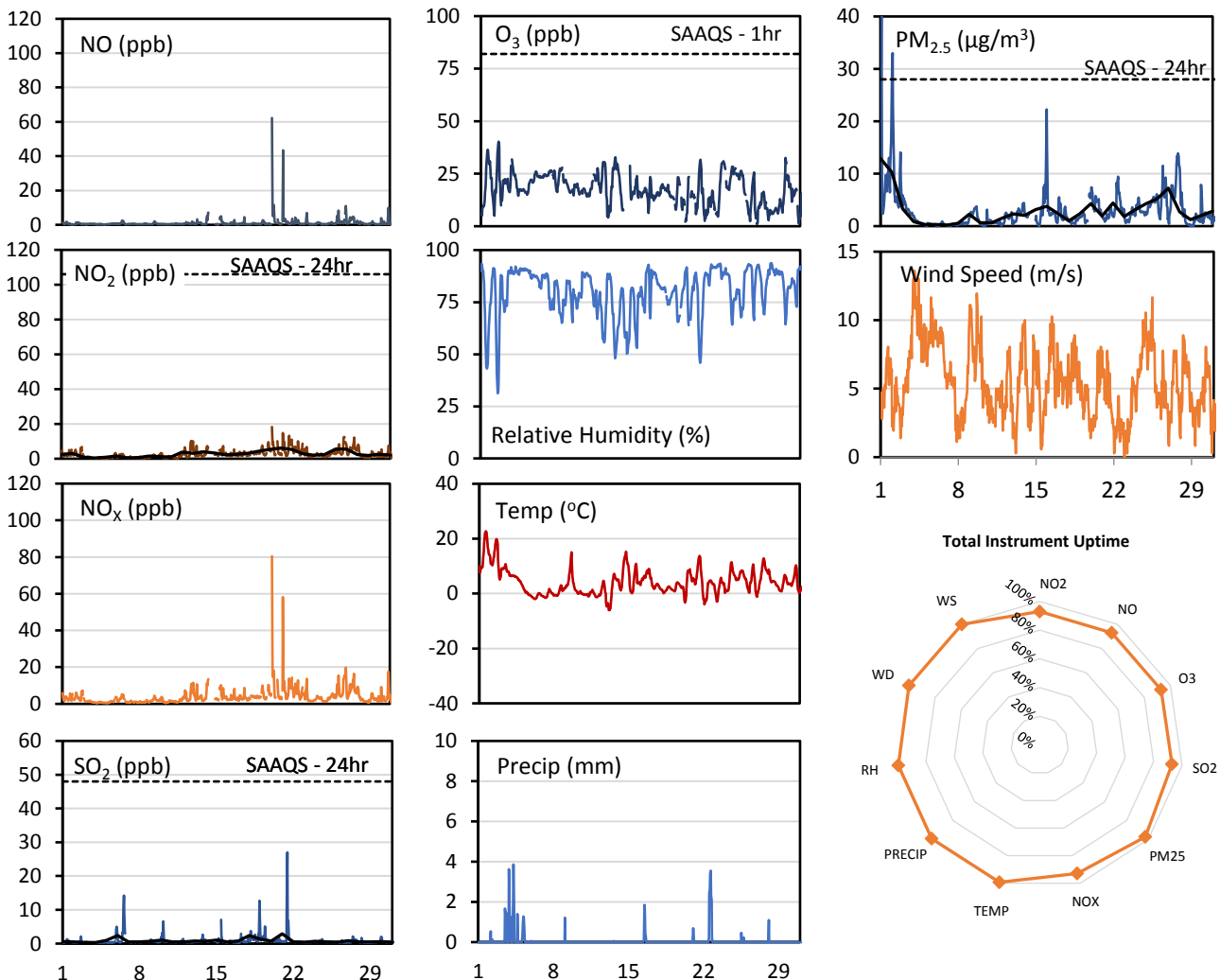
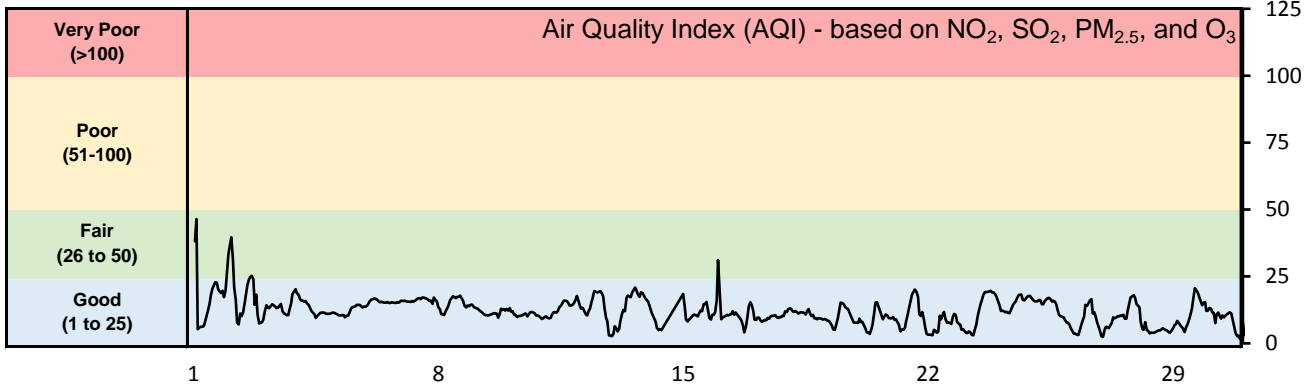


GPAZ East Regina Station - October 2016 Summary Report

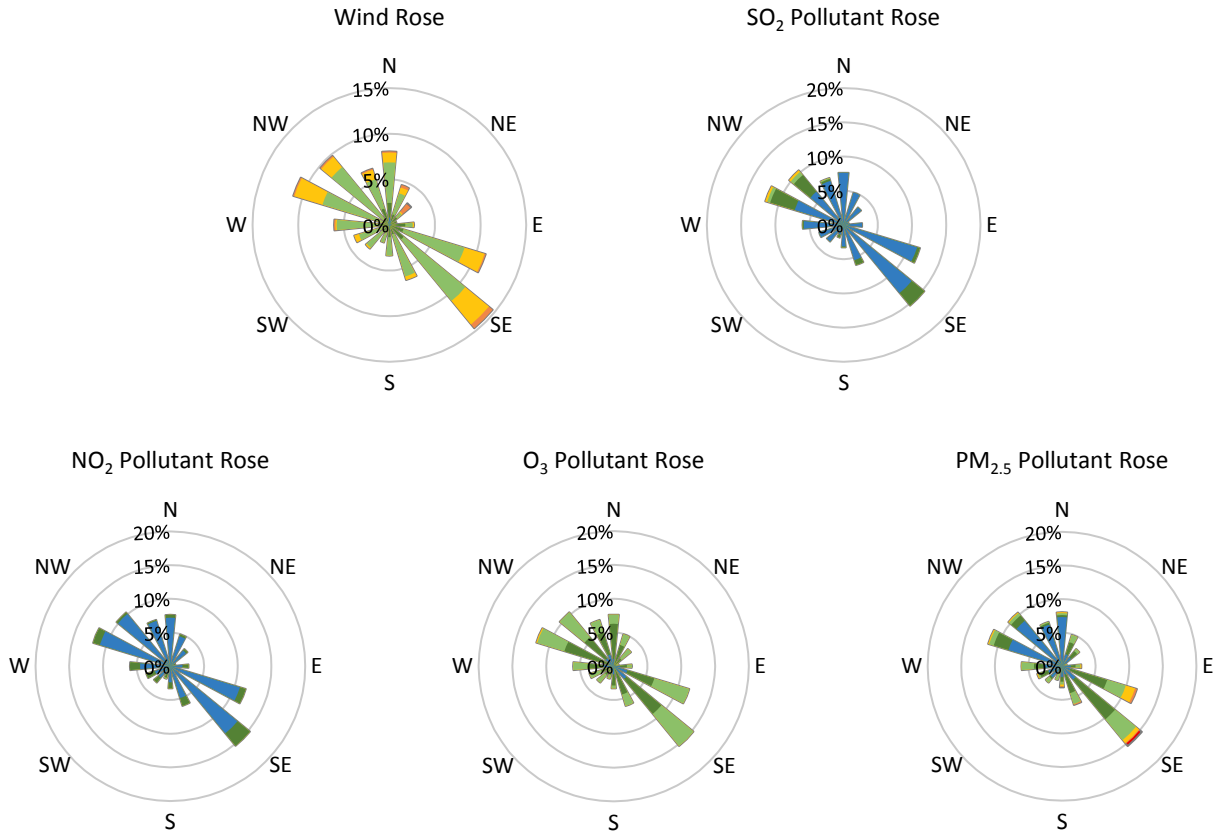
Pollutants		Month Records		24-Hour Records				1-Hour Records			
Name	Conc. Unit	Avg. Conc.	Uptime	Maximum		SAAQS Standard	Exceed Days	Maximum		SAAQS Standard	Exceed Hours
				Conc.	Time			Conc.	Time		
NO	ppb	1.1	93%	5.7	Oct-20	-	-	62.2	Oct-20 05:00	-	-
NO ₂	ppb	2.7	93%	6.1	Oct-21	106	0	18.2	Oct-20 05:00	159	0
NO _x	ppb	3.8	93%	11.1	Oct-20	-	-	80.4	Oct-20 05:00	-	-
SO ₂	ppb	0.8	93%	2.9	Oct-21	48	0	27.0	Oct-21 11:00	172	0
O ₃	ppb	17.4	93%	25.0	Oct-07	-	-	40.2	Oct-02 16:00	82	0
PM _{2.5}	µg/m ³	3.0	97%	12.9	Oct-01	28	0	68.7	Oct-01 00:00	-	-

SAAQS: Saskatchewan Ambient Air Quality Standards



* colored lines indicate 1-hr concentration data for all parameters; solid black lines indicate 24-hr concentrations for PM_{2.5}, NO₂, and SO₂

GPAZ East Regina Station - October 2016 Summary Report



Parameters	Unit	Color Code for Wind Speed and Pollution Concentration Class						
		$0.3 \leq WS < 1.4$	$1.4 \leq WS < 3.1$	$3.1 \leq WS < 7.8$	$7.8 \leq WS < 10.8$	$10.8 \leq WS < 13.6$	$WS \geq 13.6$	
SO ₂	ppb	$0 \leq C < 1$	$1 \leq C < 5$	$5 \leq C < 10$	$10 \leq C < 57$	$57 \leq C < 172$	$C \geq 172$	
NO ₂	ppb	$0 \leq C < 5$	$5 \leq C < 15$	$15 \leq C < 30$	$30 \leq C < 100$	$100 \leq C < 212$	$C \geq 212$	
O ₃	ppb	$0 \leq C < 10$	$10 \leq C < 20$	$20 \leq C < 40$	$40 \leq C < 60$	$60 \leq C < 82$	$C \geq 82$	
PM _{2.5}	$\mu\text{g}/\text{m}^3$	$0 \leq C < 2$	$2 \leq C < 4$	$4 \leq C < 10$	$10 \leq C < 20$	$20 \leq C < 30$	$C \geq 30$	

Monthly Update

- Achieved >97% of scheduled uptime for all parameters except wind speed and direction (data discarded)
- All compliance parameters are above 90% data validity
- Wind speed and direction taken from Regina Airport