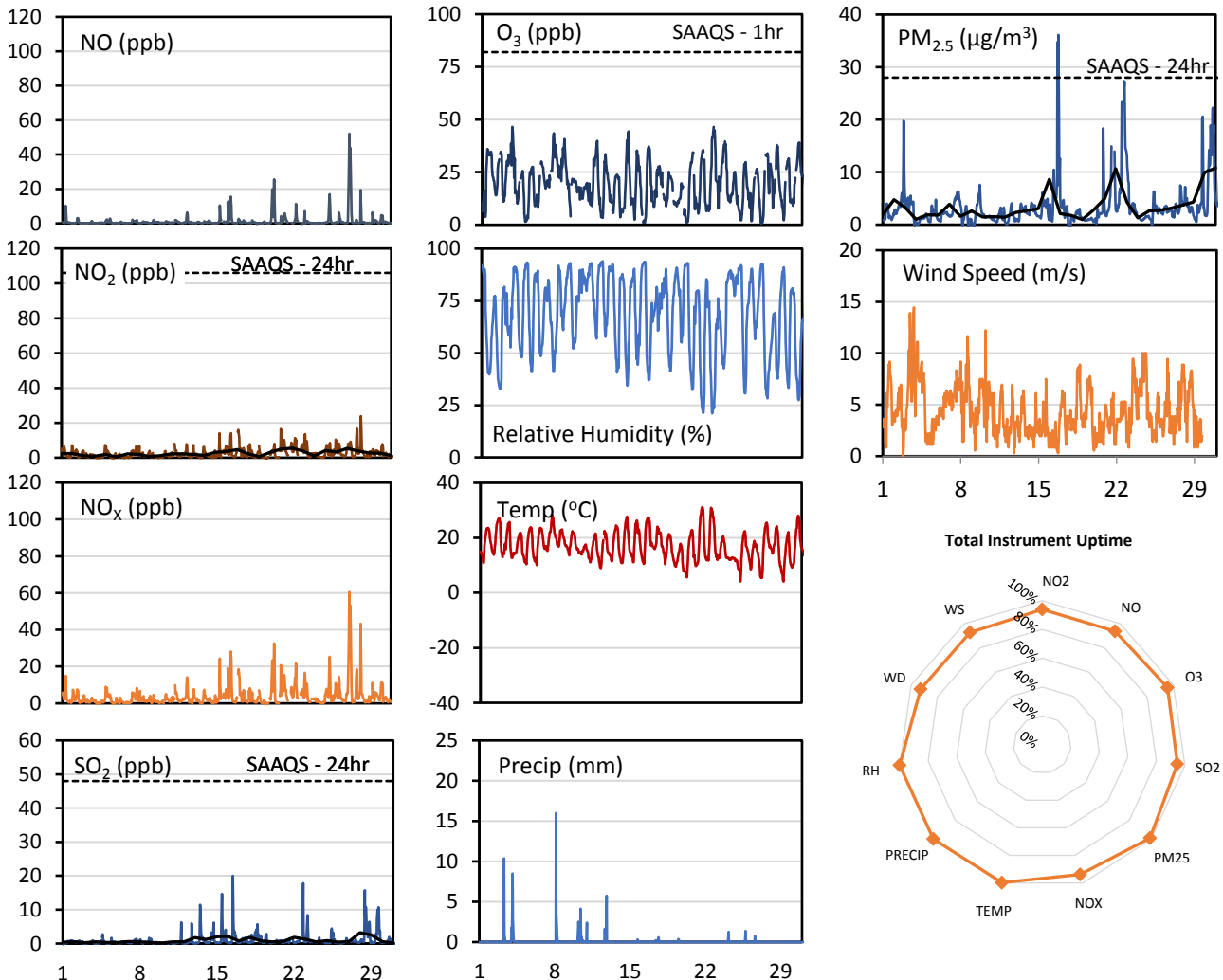
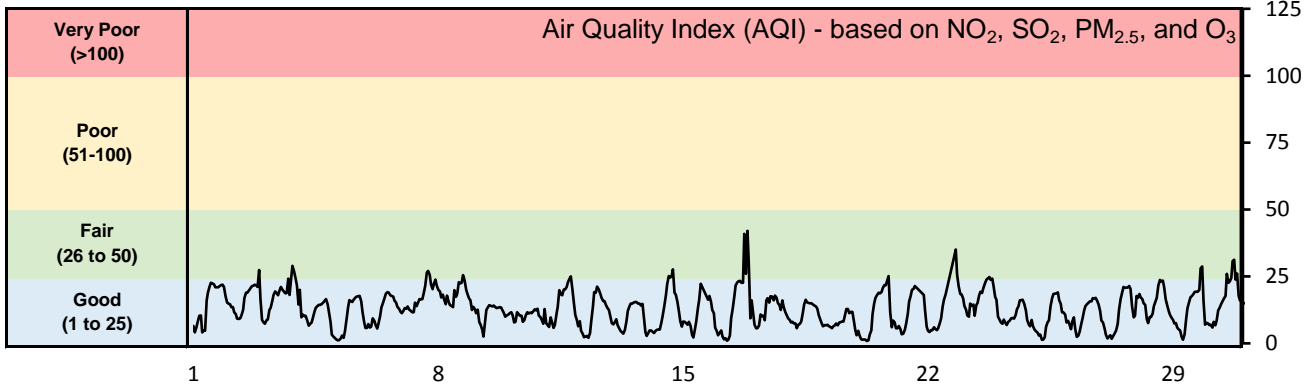


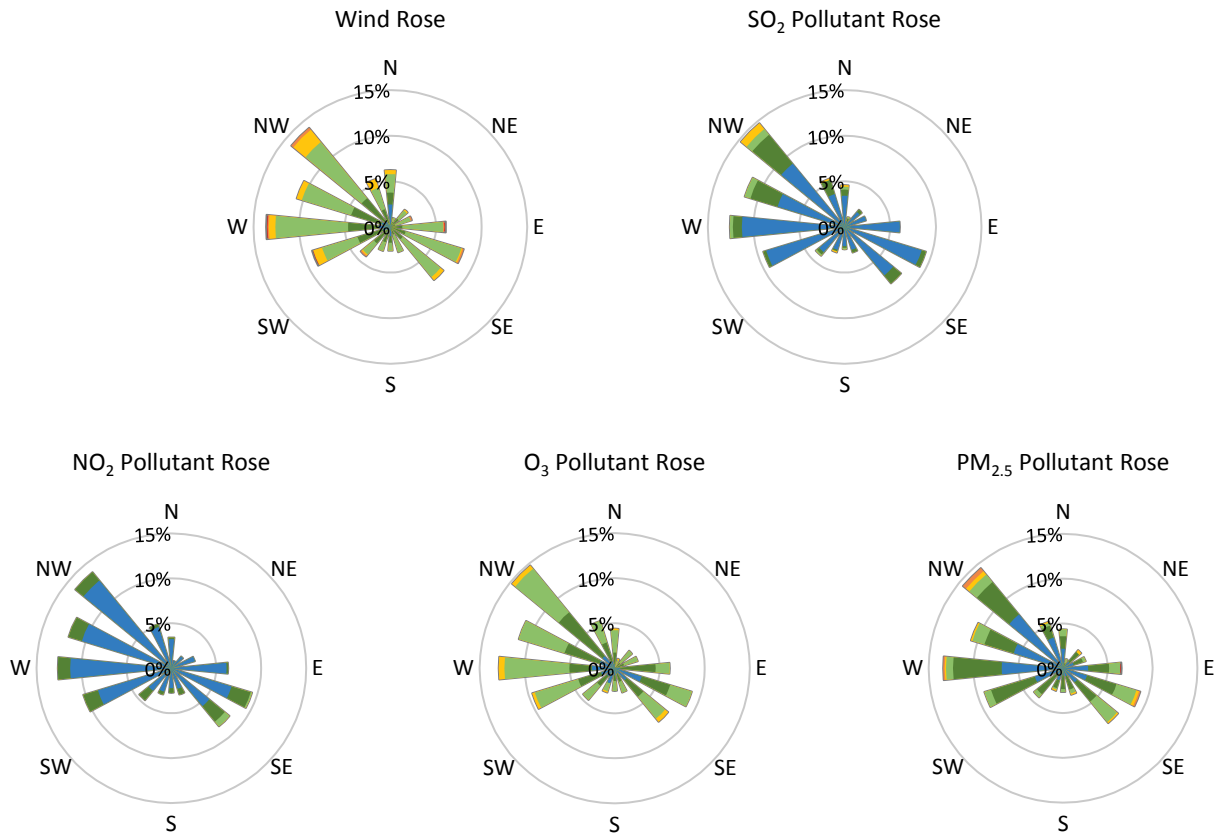
GPAZ East Regina Station - August 2016 Summary Report

| Pollutants | | Month Records | | 24-Hour Records | | | | 1-Hour Records | | | |
|-------------------|-------------------|---------------|--------|-----------------|--------|----------------|-------------|----------------|--------------|----------------|--------------|
| Name | Conc. Unit | Avg. Conc. | Uptime | Maximum | | SAAQS Standard | Exceed Days | Maximum | | SAAQS Standard | Exceed Hours |
| | | | | Conc. | Time | | | Conc. | Time | | |
| NO | ppb | 1.3 | 94% | 10.0 | Aug-27 | - | - | 52.1 | Aug-27 05:00 | - | - |
| NO ₂ | ppb | 2.5 | 94% | 5.4 | Aug-22 | 106 | 0 | 23.8 | Aug-28 06:00 | 159 | 0 |
| NO _x | ppb | 3.8 | 94% | 15.4 | Aug-27 | - | - | 60.5 | Aug-27 05:00 | - | - |
| SO ₂ | ppb | 0.9 | 95% | 3.2 | Aug-28 | 48 | 0 | 20.0 | Aug-16 11:00 | 172 | 0 |
| O ₃ | ppb | 19.8 | 96% | 28.8 | Aug-08 | - | - | 46.5 | Aug-03 20:00 | 82 | 0 |
| PM _{2.5} | µg/m ³ | 3.5 | 99% | 10.8 | Aug-31 | 28 | 0 | 36.1 | Aug-16 20:00 | - | - |

SAAQS: Saskatchewan Ambient Air Quality Standards



* colored lines indicate 1-hr concentration data for all parameters; solid black lines indicate 24-hr concentrations for PM_{2.5}, NO₂, and SO₂



| Parameters | Unit | Color Code for Wind Speed and Pollution Concentration Class | | | | | | |
|-------------------|--------------------------|---|---------------------|---------------------|----------------------|-----------------------|----------------|--|
| | | $0.3 \leq WS < 1.4$ | $1.4 \leq WS < 3.1$ | $3.1 \leq WS < 7.8$ | $7.8 \leq WS < 10.8$ | $10.8 \leq WS < 13.6$ | $WS \geq 13.6$ | |
| SO ₂ | ppb | $0 \leq C < 1$ | $1 \leq C < 5$ | $5 \leq C < 10$ | $10 \leq C < 57$ | $57 \leq C < 172$ | $C \geq 172$ | |
| NO ₂ | ppb | $0 \leq C < 5$ | $5 \leq C < 15$ | $15 \leq C < 30$ | $30 \leq C < 100$ | $100 \leq C < 212$ | $C \geq 212$ | |
| O ₃ | ppb | $0 \leq C < 10$ | $10 \leq C < 20$ | $20 \leq C < 40$ | $40 \leq C < 60$ | $60 \leq C < 82$ | $C \geq 82$ | |
| PM _{2.5} | $\mu\text{g}/\text{m}^3$ | $0 \leq C < 2$ | $2 \leq C < 4$ | $4 \leq C < 10$ | $10 \leq C < 20$ | $20 \leq C < 30$ | $C \geq 30$ | |

Monthly Update

- Achieved >98% of scheduled uptime for all parameters except wind speed and direction (data discarded)
- All compliance parameters are above 90% data validity
- Wind speed and direction data obtained from Regina airport