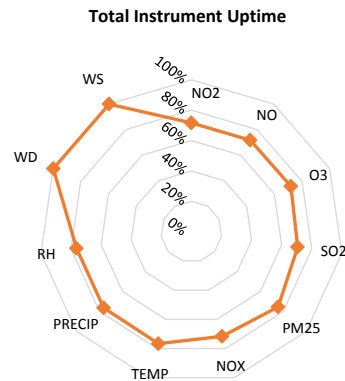
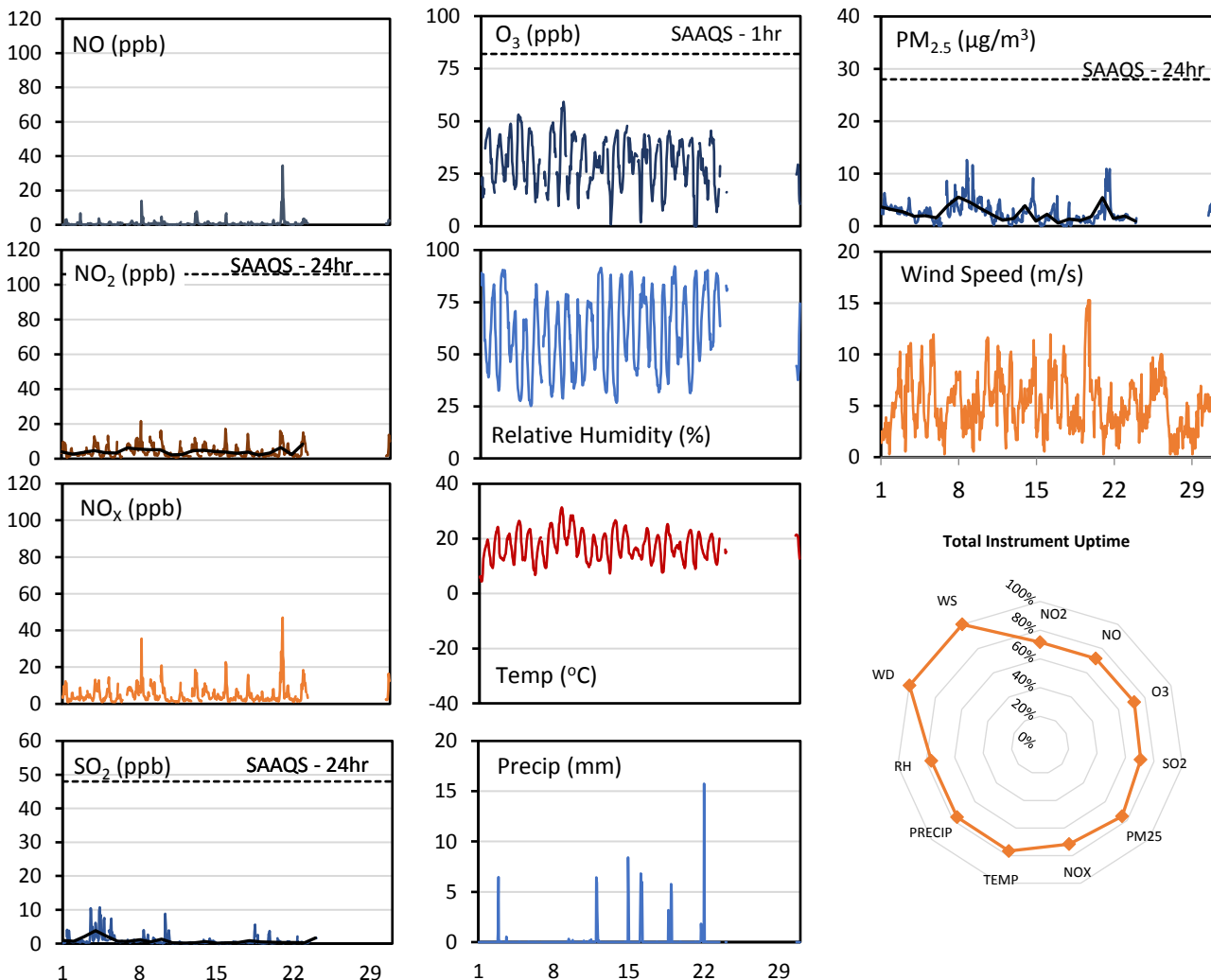
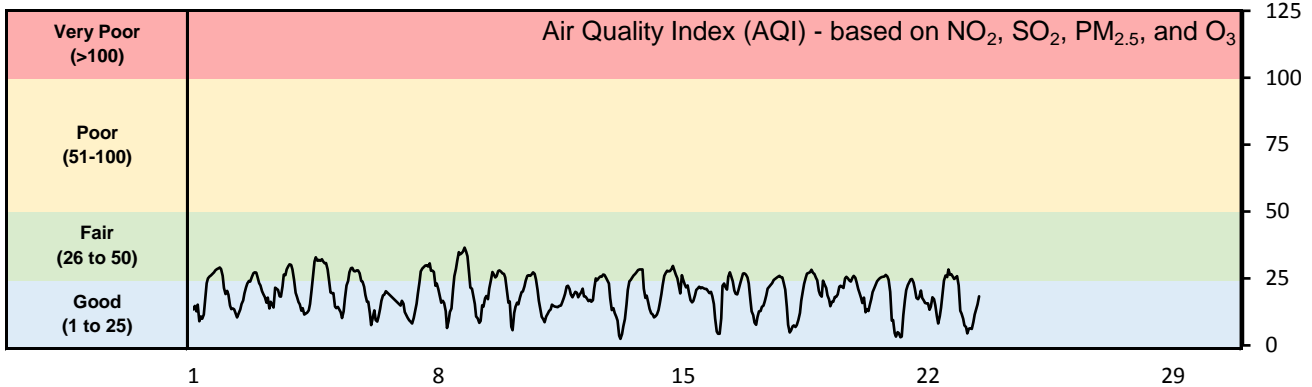


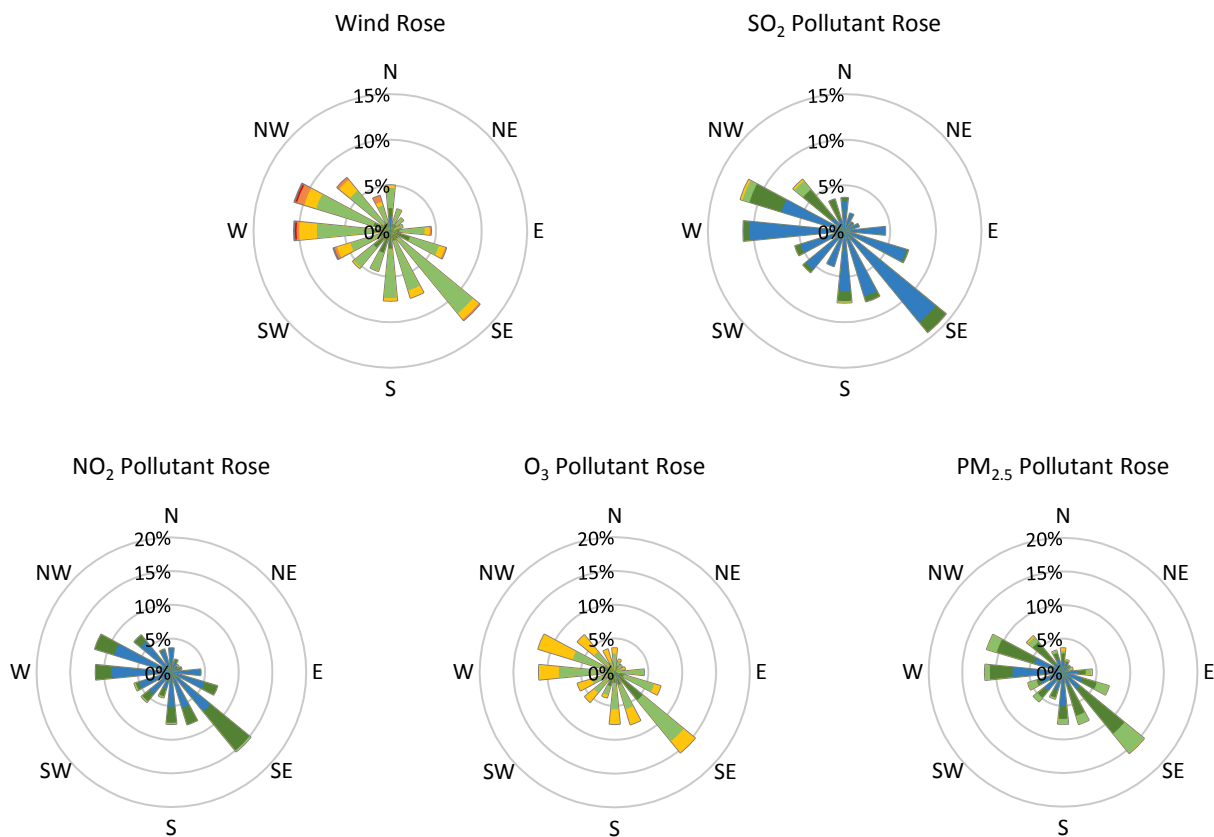
## GPAZ East Regina Station - June 2016 Summary Report

Pollutants		Month Records		24-Hour Records				1-Hour Records			
Name	Conc. Unit	Avg. Conc.	Uptime	Maximum		SAAQS Standard	Exceed Days	Maximum		SAAQS Standard	Exceed Hours
				Conc.	Time			Conc.	Time		
NO	ppb	0.9	72%	5.2	Jun-21	-	-	34.5	Jun-21 04:00	-	-
NO <sub>2</sub>	ppb	4.1	72%	8.4	Jun-23	106	0	21.6	Jun-08 06:00	159	0
NO <sub>x</sub>	ppb	5.0	72%	11.5	Jun-21	-	-	47.0	Jun-21 04:00	-	-
SO <sub>2</sub>	ppb	0.8	71%	3.8	Jun-04	48	0	10.7	Jun-04 09:00	172	0
O <sub>3</sub>	ppb	30.4	72%	37.7	Jun-08	-	-	59.2	Jun-08 18:00	82	0
PM <sub>2.5</sub>	µg/m <sup>3</sup>	2.6	76%	5.5	Jun-08	28	0	12.6	Jun-08 18:00	-	-

SAAQS: Saskatchewan Ambient Air Quality Standards



\* colored lines indicate 1-hr concentration data for all parameters; solid black lines indicate 24-hr concentrations for PM<sub>2.5</sub>, NO<sub>2</sub>, and SO<sub>2</sub>



Parameters	Unit	Color Code for Wind Speed and Pollution Concentration Class					
		0.3 ≤ WS < 1.4	1.4 ≤ WS < 3.1	3.1 ≤ WS < 7.8	7.8 ≤ WS < 10.8	10.8 ≤ WS < 13.6	WS ≥ 13.6
SO <sub>2</sub>	ppb	0 ≤ C < 1	1 ≤ C < 5	5 ≤ C < 10	10 ≤ C < 57	57 ≤ C < 172	C ≥ 172
NO <sub>2</sub>	ppb	0 ≤ C < 5	5 ≤ C < 15	15 ≤ C < 30	30 ≤ C < 100	100 ≤ C < 212	C ≥ 212
O <sub>3</sub>	ppb	0 ≤ C < 10	10 ≤ C < 20	20 ≤ C < 40	40 ≤ C < 60	60 ≤ C < 82	C ≥ 82
PM <sub>2.5</sub>	µg/m <sup>3</sup>	0 ≤ C < 2	2 ≤ C < 4	4 ≤ C < 10	10 ≤ C < 20	20 ≤ C < 30	C ≥ 30

**Monthly Update**

- Achieved 73.9-76.7% of scheduled uptime for all parameters
- Downtime of 4% expected from daily internal zero and span calibrations
- Wind speed and direction data obtained from Regina airport
- Downtime due to blown fuse
- Calibration performed June 6, 2016