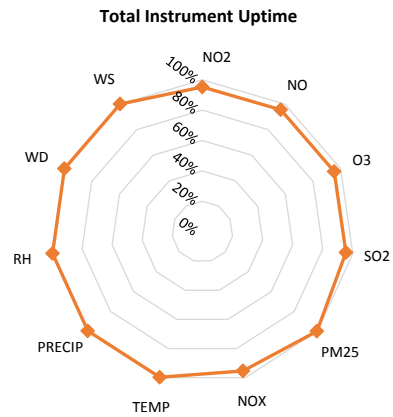
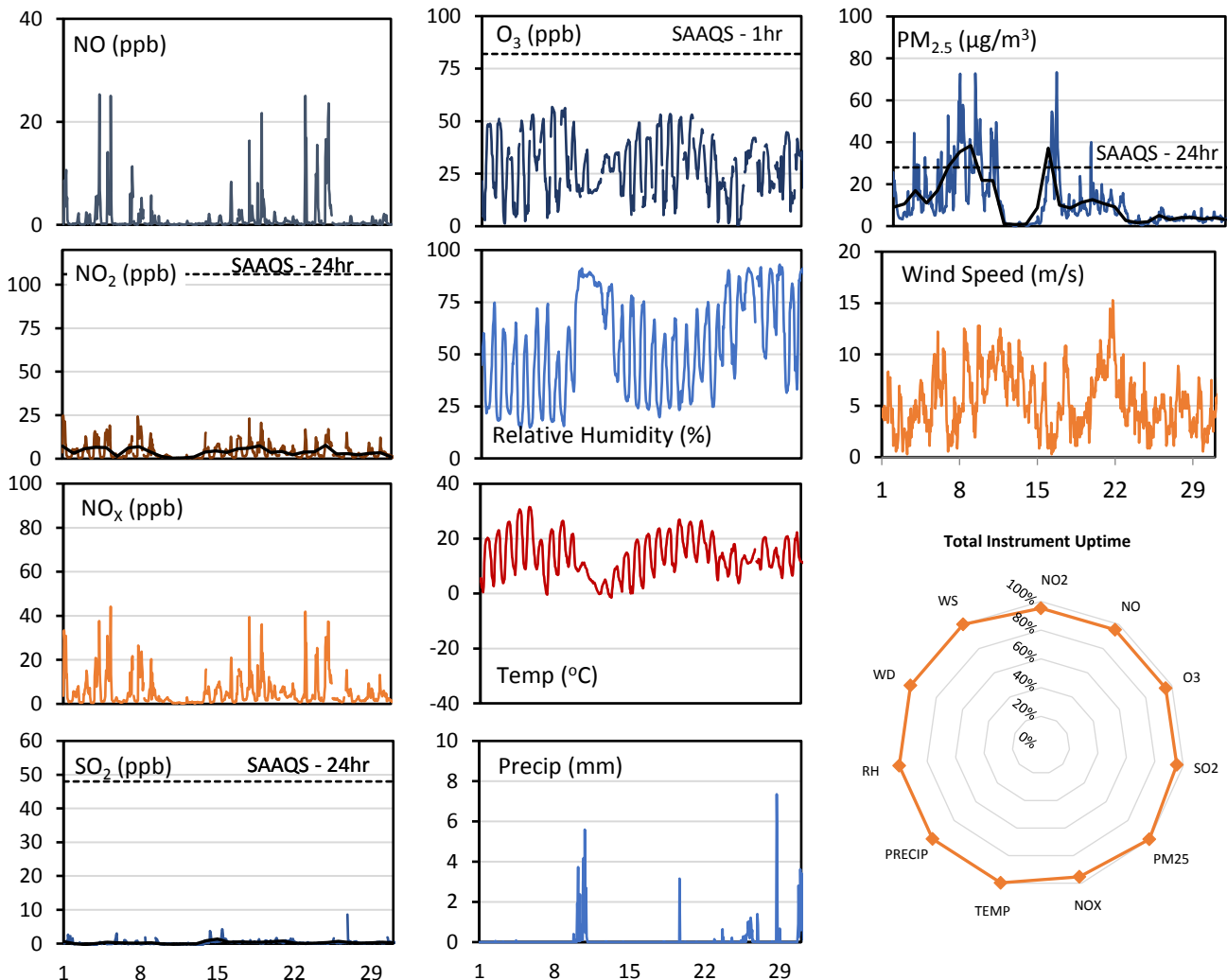
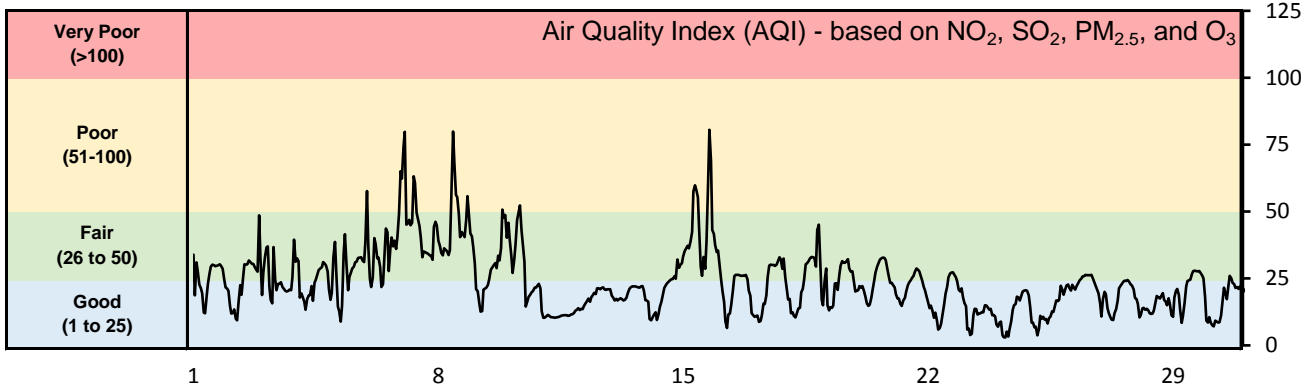


GPAZ East Regina Station - May 2016 Summary Report

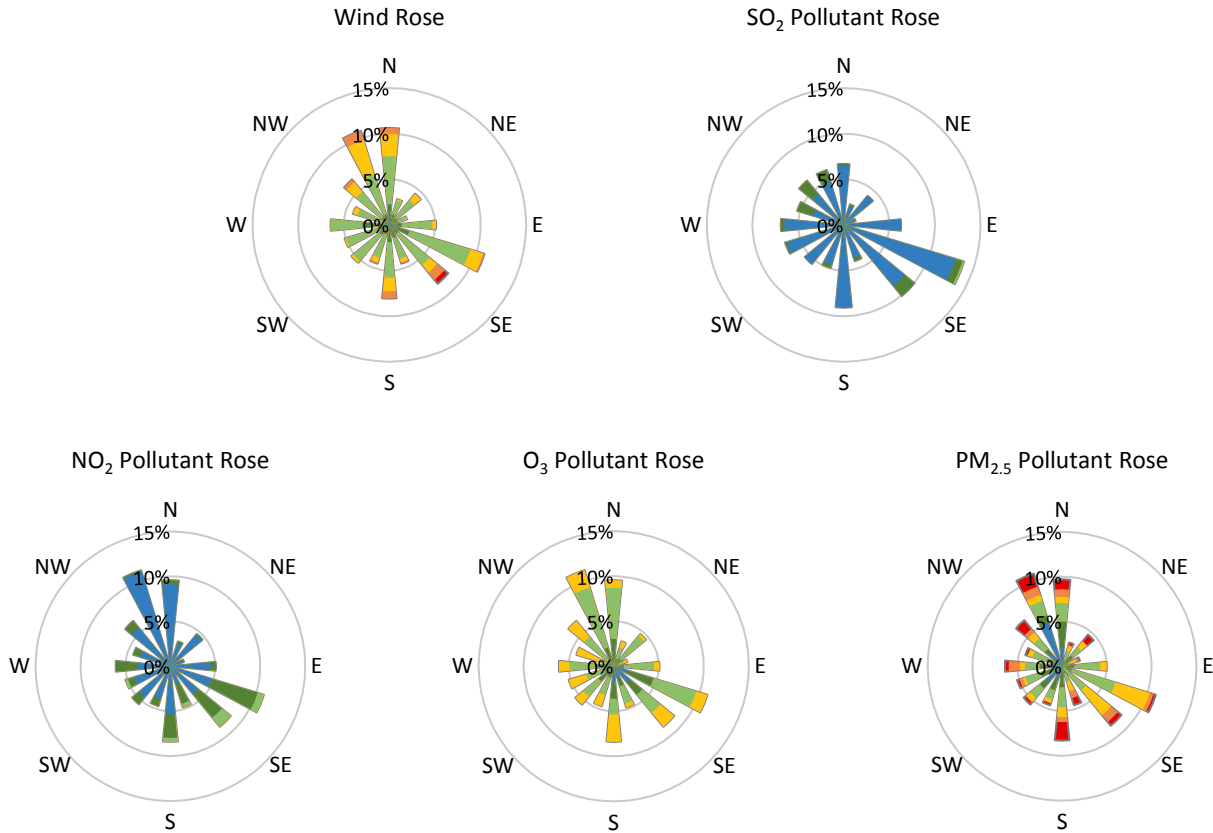
Pollutants		Month Records		24-Hour Records				1-Hour Records			
Name	Conc. Unit	Avg. Conc.	Uptime	Maximum		SAAQS Standard	Exceed Days	Maximum		SAAQS Standard	Exceed Hours
				Conc.	Time			Conc.	Time		
NO	ppb	1.2	95%	6.2	May-25	-	-	25.3	May-04 07:00	-	-
NO ₂	ppb	3.9	95%	7.7	May-25	106	0	24.7	May-01 02:00	159	0
NO _x	ppb	5.2	95%	13.9	May-25	-	-	44.2	May-05 08:00	-	-
SO ₂	ppb	0.3	95%	1.4	May-15	48	0	8.6	May-26 20:00	172	0
O ₃	ppb	28.3	95%	38.4	May-20	-	-	56.8	May-07 14:00	82	0
PM _{2.5}	µg/m ³	11.5	100%	38.4	May-08	28	4	73.4	May-15 18:00	-	-

SAAQS: Saskatchewan Ambient Air Quality Standards



* colored lines indicate 1-hr concentration data for all parameters; solid black lines indicate 24-hr concentrations for PM_{2.5}, NO₂, and SO₂

GPAZ East Regina Station - May 2016 Summary Report



Parameters	Unit	Color Code for Wind Speed and Pollution Concentration Class						
		0.3 ≤ WS < 1.4	1.4 ≤ WS < 3.1	3.1 ≤ WS < 7.8	7.8 ≤ WS < 10.8	10.8 ≤ WS < 13.6	WS ≥ 13.6	
SO ₂	ppb	0 ≤ C < 1	1 ≤ C < 5	5 ≤ C < 10	10 ≤ C < 57	57 ≤ C < 172	C ≥ 172	
NO ₂	ppb	0 ≤ C < 5	5 ≤ C < 15	15 ≤ C < 30	30 ≤ C < 100	100 ≤ C < 212	C ≥ 212	
O ₃	ppb	0 ≤ C < 10	10 ≤ C < 20	20 ≤ C < 40	40 ≤ C < 60	60 ≤ C < 82	C ≥ 82	
PM _{2.5}	µg/m ³	0 ≤ C < 2	2 ≤ C < 4	4 ≤ C < 10	10 ≤ C < 20	20 ≤ C < 30	C ≥ 30	

Monthly Update

- Achieved >99% of scheduled uptime for all parameters except wind speed and direction (data discarded)
- All compliance parameters are above 90% data validity
- Wind speed and direction data obtained from Regina airport

Exceedance Summary (24- Hour Average - Exceedances Highlighted)

Exceedance Time	AQI	NO ₂ ppb	NO ppb	SO ₂ ppb	O ₃ ppb	NO _x ppb	PM _{2.5} µg/m ³	Temp °C	WD deg	WS m/s
May-06	36.1	1.4	0.1	0.2	36.2	1.5	28.6	13.7	335.4	6.9
May-07	41.5	6.3	1.8	0.1	30.2	8.1	35.4	12.7	197.1	2.7
May-08	43.9	6.9	1.0	0.1	35.3	7.9	38.4	17.3	165.0	7.8
May-15	42.9	4.4	0.5	1.4	29.8	4.9	37.2	10.5	287.5	4.0