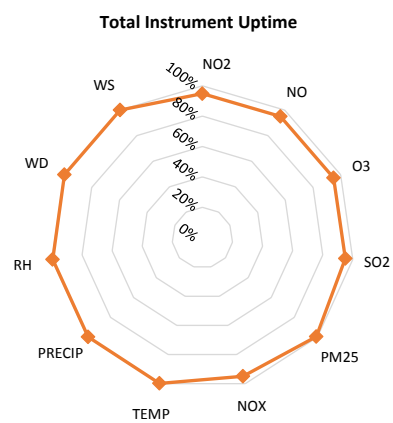
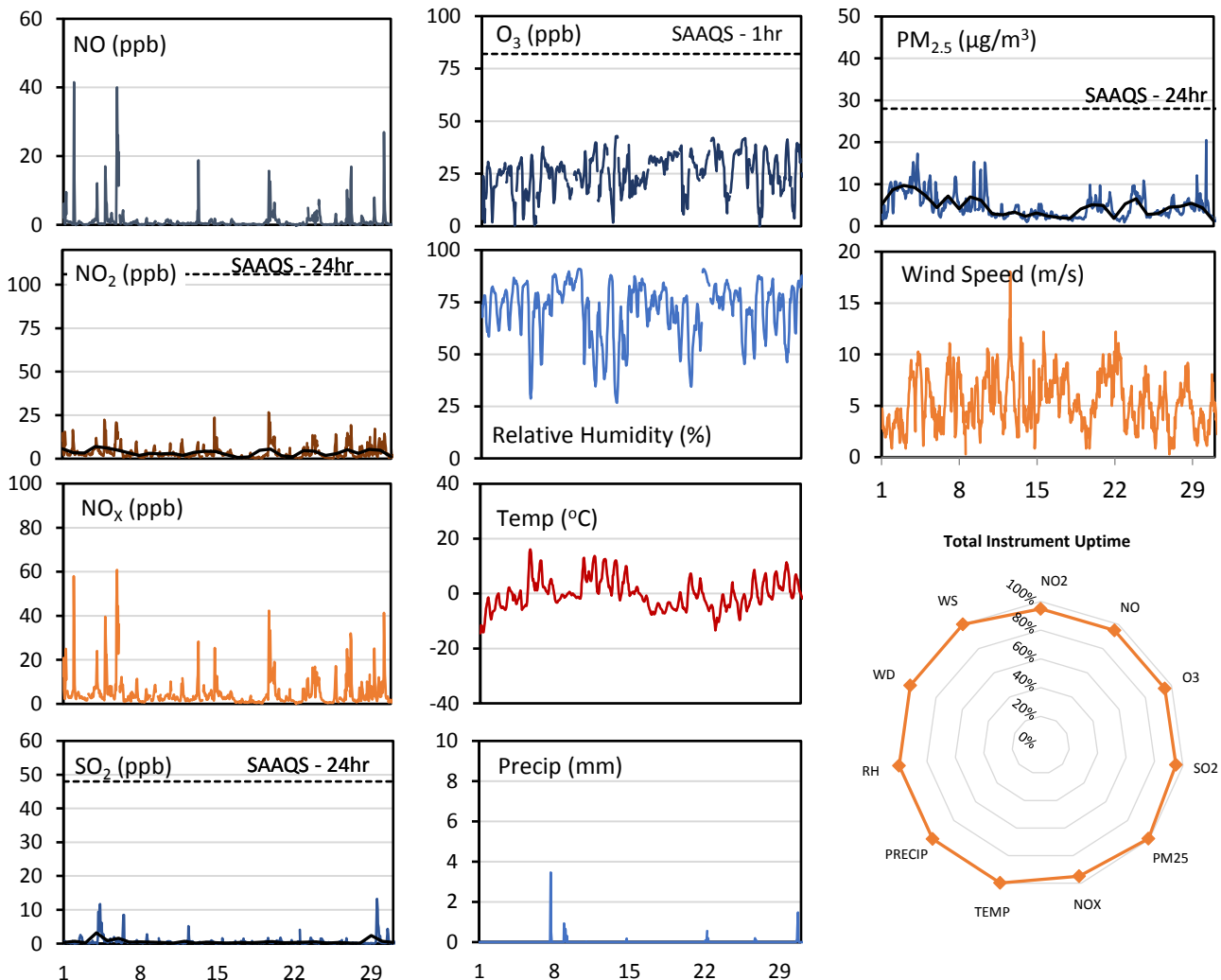
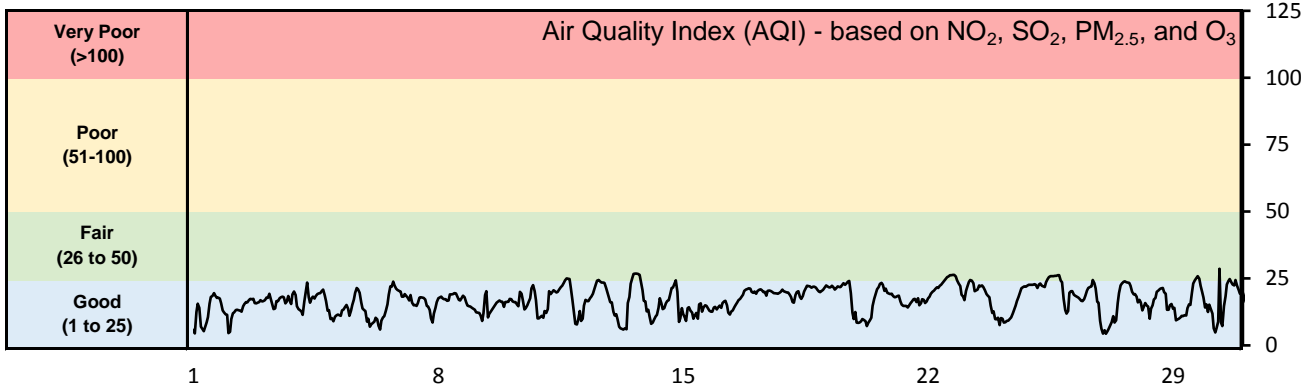


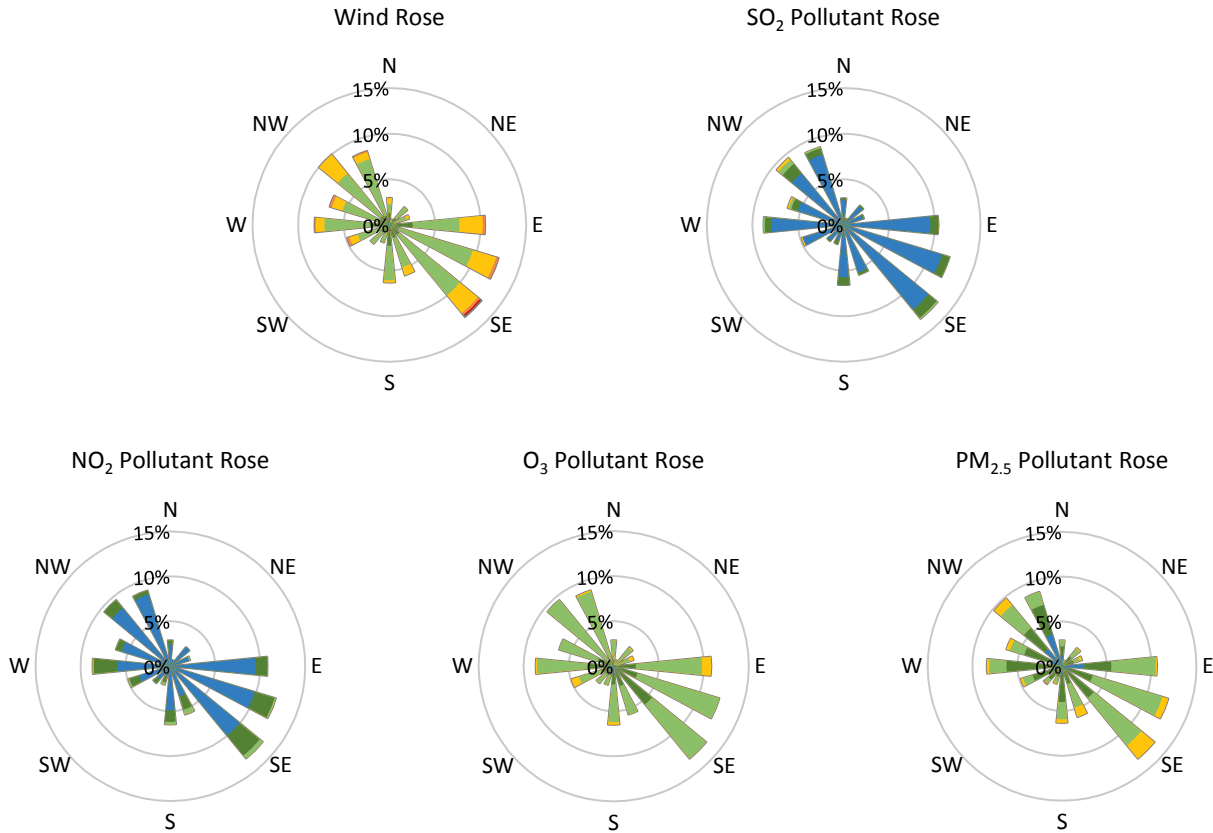
## GPAZ East Regina Station - March 2016 Summary Report

Pollutants		Month Records		24-Hour Records				1-Hour Records			
Name	Conc. Unit	Avg. Conc.	Uptime	Maximum		SAAQS Standard	Exceed Days	Maximum		SAAQS Standard	Exceed Hours
				Conc.	Time			Conc.	Time		
NO	ppb	1.2	95%	4.7	Mar-05	-	-	41.5	Mar-01 23:00	-	-
NO <sub>2</sub>	ppb	3.5	95%	7.0	Mar-04	106	0	26.7	Mar-19 20:00	159	0
NO <sub>x</sub>	ppb	4.7	95%	10.9	Mar-05	-	-	60.8	Mar-05 22:00	-	-
SO <sub>2</sub>	ppb	0.6	95%	3.2	Mar-04	48	0	13.2	Mar-29 13:00	172	0
O <sub>3</sub>	ppb	25.5	95%	36.3	Mar-25	-	-	42.9	Mar-13 15:00	82	0
PM <sub>2.5</sub>	µg/m <sup>3</sup>	4.6	99%	9.7	Mar-03	28	0	20.5	Mar-30 08:00	-	-

SAAQS: Saskatchewan Ambient Air Quality Standards



\* colored lines indicate 1-hr concentration data for all parameters; solid black lines indicate 24-hr concentrations for PM<sub>2.5</sub>, NO<sub>2</sub>, and SO<sub>2</sub>



Parameters	Unit	Color Code for Wind Speed and Pollution Concentration Class					
		$0.3 \leq WS < 1.4$	$1.4 \leq WS < 3.1$	$3.1 \leq WS < 7.8$	$7.8 \leq WS < 10.8$	$10.8 \leq WS < 13.6$	$WS \geq 13.6$
SO <sub>2</sub>	ppb	$0 \leq C < 1$	$1 \leq C < 5$	$5 \leq C < 10$	$10 \leq C < 57$	$57 \leq C < 172$	$C \geq 172$
NO <sub>2</sub>	ppb	$0 \leq C < 5$	$5 \leq C < 15$	$15 \leq C < 30$	$30 \leq C < 100$	$100 \leq C < 212$	$C \geq 212$
O <sub>3</sub>	ppb	$0 \leq C < 10$	$10 \leq C < 20$	$20 \leq C < 40$	$40 \leq C < 60$	$60 \leq C < 82$	$C \geq 82$
PM <sub>2.5</sub>	$\mu\text{g}/\text{m}^3$	$0 \leq C < 2$	$2 \leq C < 4$	$4 \leq C < 10$	$10 \leq C < 20$	$20 \leq C < 30$	$C \geq 30$

**Monthly Update**

- Achieved >99% of scheduled uptime for all parameters except wind speed and direction (data discarded)
- All compliance parameters are above 90% data validity
- Wind speed and direction data obtained from Regina airport
- Calibration performed March 9