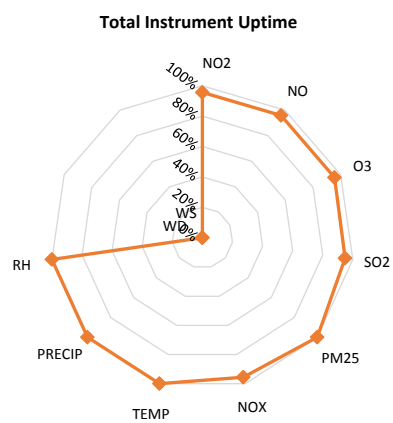
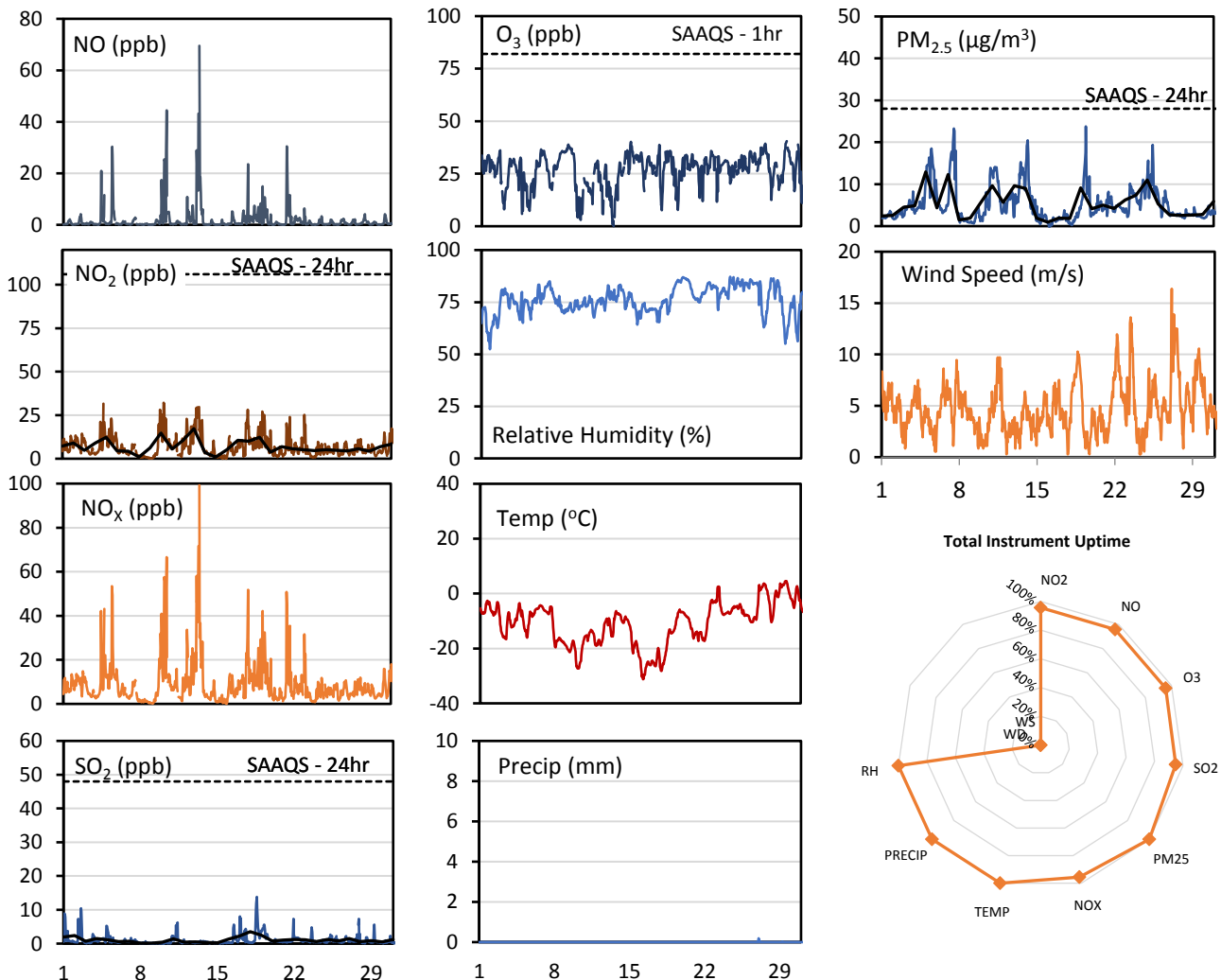
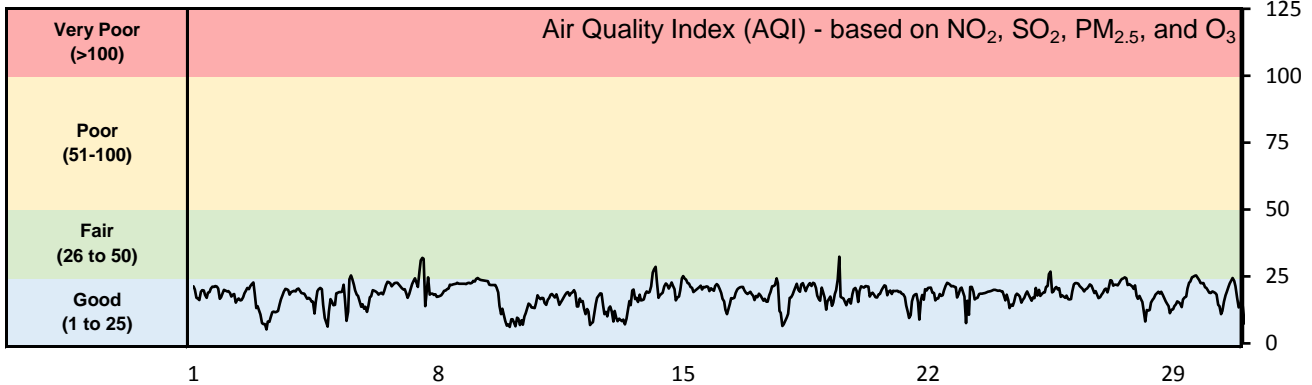


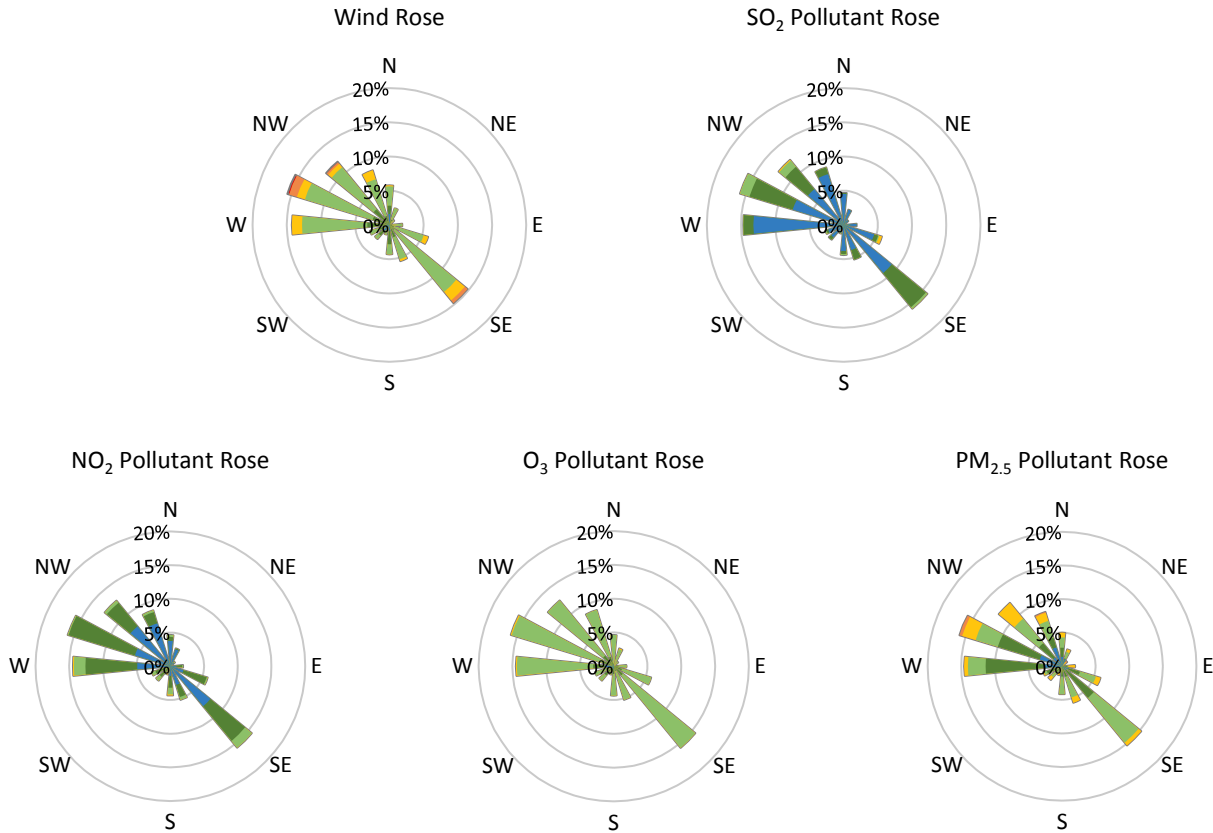
GPAZ East Regina Station - January 2016 Summary Report

Pollutants		Month Records		24-Hour Records				1-Hour Records			
Name	Conc. Unit	Avg. Conc.	Uptime	Maximum		SAAQS Standard	Exceed Days	Maximum		SAAQS Standard	Exceed Hours
				Conc.	Time			Conc.	Time		
NO	ppb	2.0	96%	11.9	Jan-13	-	-	69.5	Jan-13 11:00	-	-
NO ₂	ppb	6.9	96%	17.3	Jan-13	106	0	32.2	Jan-10 06:00	159	0
NO _x	ppb	8.9	96%	29.2	Jan-13	-	-	99.2	Jan-13 11:00	-	-
SO ₂	ppb	1.1	95%	3.5	Jan-18	48	0	13.8	Jan-18 14:00	172	0
O ₃	ppb	26.6	96%	34.5	Jan-27	-	-	40.5	Jan-29 16:00	82	0
PM _{2.5}	µg/m ³	5.3	100%	12.9	Jan-05	28	0	23.8	Jan-19 11:00	-	-

SAAQS: Saskatchewan Ambient Air Quality Standards



* colored lines indicate 1-hr concentration data for all parameters; solid black lines indicate 24-hr concentrations for PM_{2.5}, NO₂, and SO₂



Parameters	Unit	Color Code for Wind Speed and Pollution Concentration Class					
		$0.3 \leq WS < 1.4$	$1.4 \leq WS < 3.1$	$3.1 \leq WS < 7.8$	$7.8 \leq WS < 10.8$	$10.8 \leq WS < 13.6$	$WS \geq 13.6$
SO ₂	ppb	$0 \leq C < 1$	$1 \leq C < 5$	$5 \leq C < 10$	$10 \leq C < 57$	$57 \leq C < 172$	$C \geq 172$
NO ₂	ppb	$0 \leq C < 5$	$5 \leq C < 15$	$15 \leq C < 30$	$30 \leq C < 100$	$100 \leq C < 212$	$C \geq 212$
O ₃	ppb	$0 \leq C < 10$	$10 \leq C < 20$	$20 \leq C < 40$	$40 \leq C < 60$	$60 \leq C < 82$	$C \geq 82$
PM _{2.5}	$\mu\text{g}/\text{m}^3$	$0 \leq C < 2$	$2 \leq C < 4$	$4 \leq C < 10$	$10 \leq C < 20$	$20 \leq C < 30$	$C \geq 30$

Monthly Update

- Achieved >99% of scheduled uptime for all parameters except wind speed and direction (data discarded)
- Downtime due to pump issues (SO₂) and daily internal zeroes and spans
- All compliance parameters are above 90% data validity
- Wind speed and direction data obtained from Regina airport