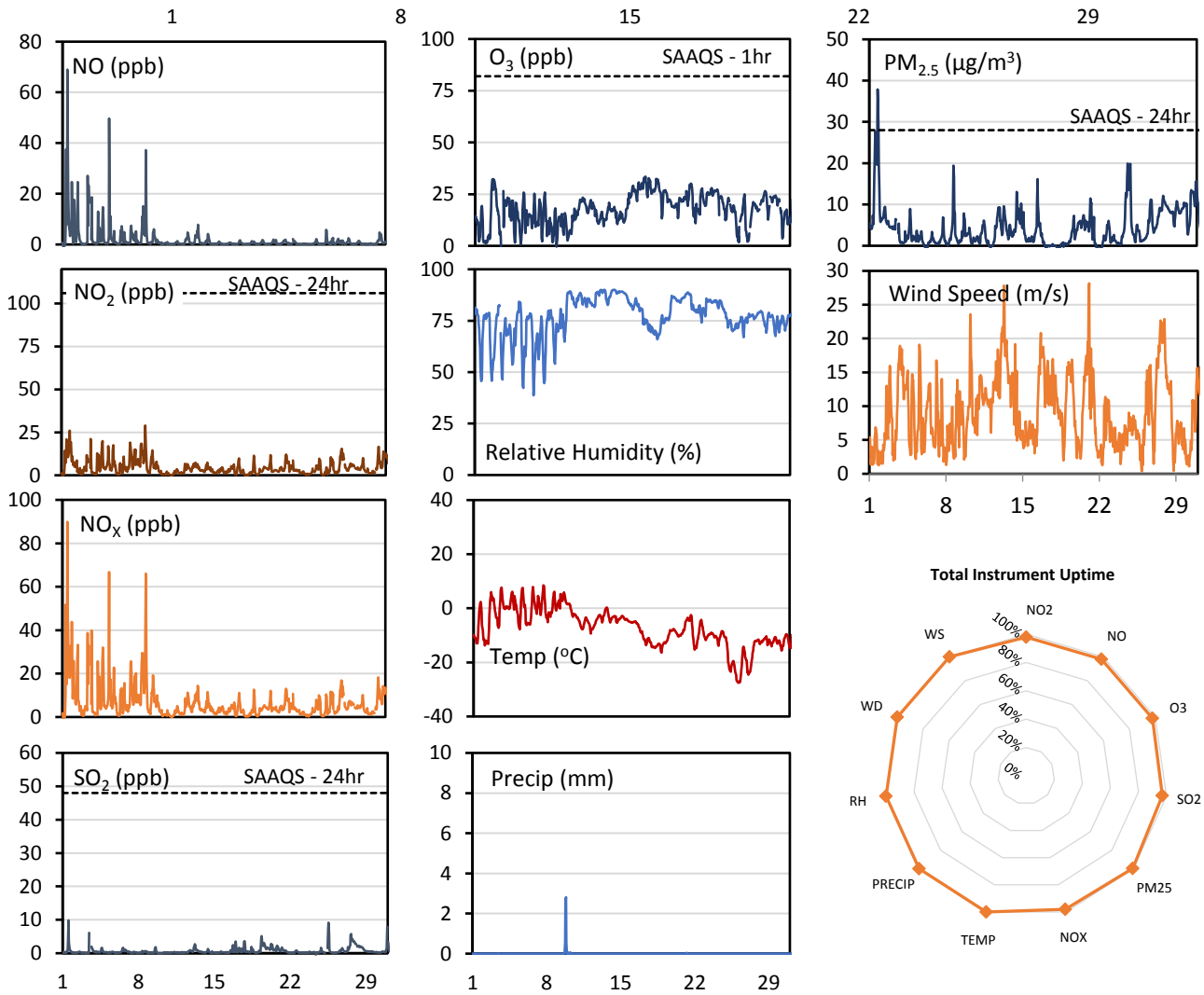
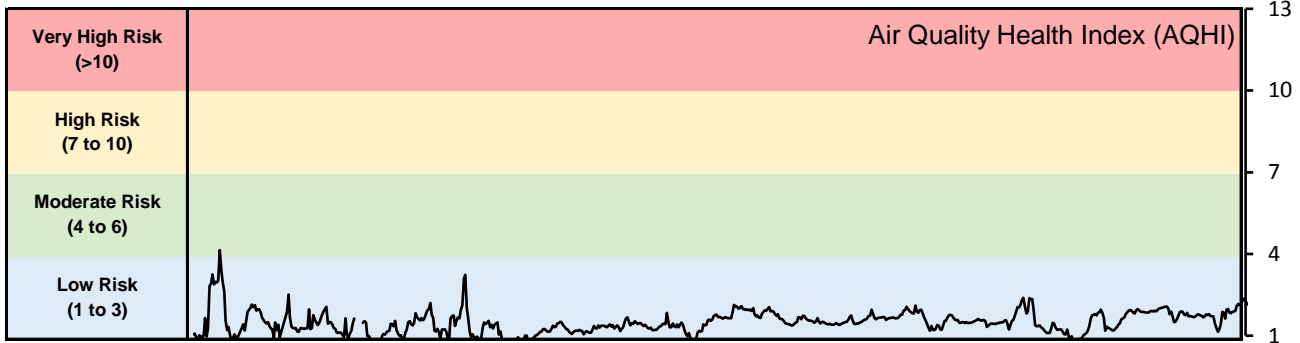
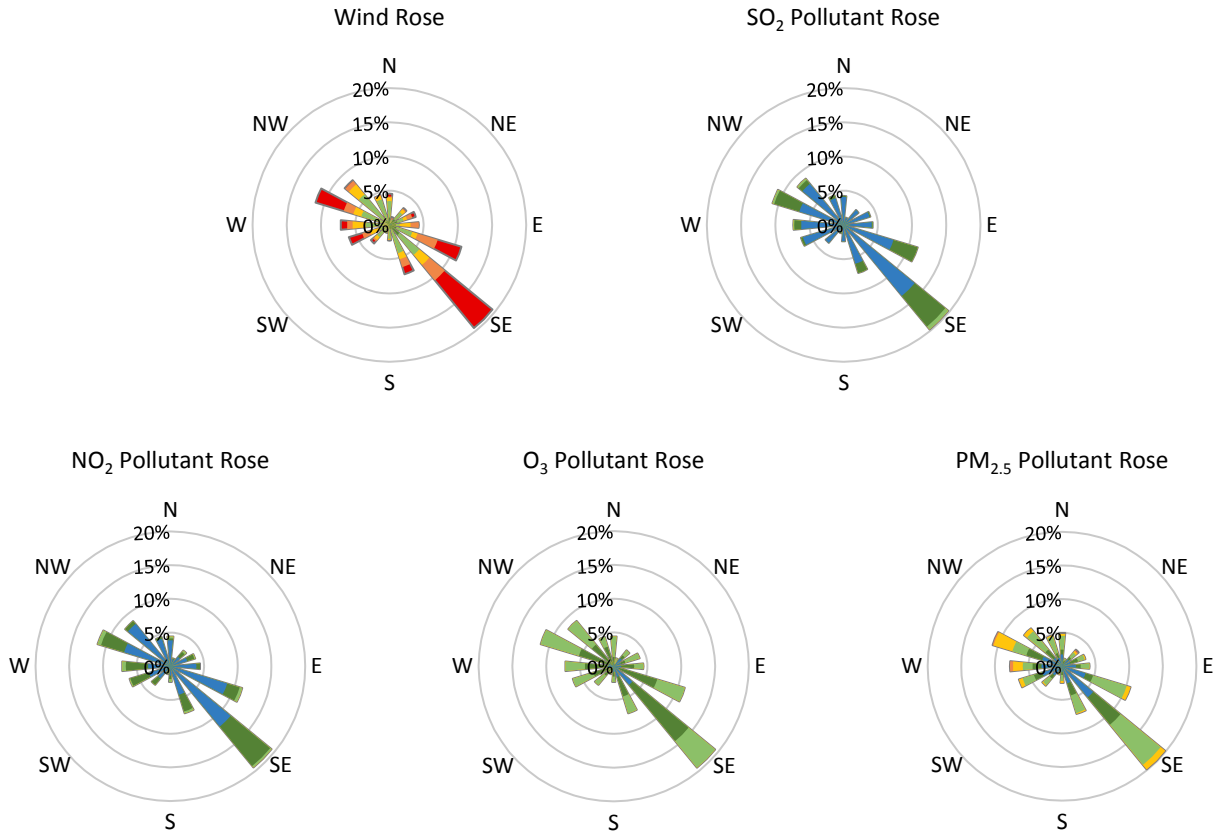


## GPAZ East Regina Station - December 2015 Summary Report

Pollutants		Month Records		24-Hour Records				1-Hour Records			
Name	Conc. Unit	Avg. Conc.	Uptime	Maximum		SAAQS Standard	Exceed Days	Maximum		SAAQS Standard	Exceed Hours
				Conc.	Time			Conc.	Time		
NO	ppb	1.8	98%	10.9	Dec-01	-	-	69.0	Dec-01 11:00	-	-
NO <sub>2</sub>	ppb	4.6	98%	11.0	Dec-08	106	0	29.0	Dec-08 18:00	159	0
NO <sub>x</sub>	ppb	6.4	98%	21.3	Dec-01	-	-	89.9	Dec-01 11:00	-	-
SO <sub>2</sub>	ppb	0.7	97%	2.4	Dec-27	48	0	9.8	Dec-01 13:00	172	0
O <sub>3</sub>	ppb	18.0	98%	29.0	Dec-17	-	-	33.5	Dec-17 05:00	82	0
PM <sub>2.5</sub>	µg/m <sup>3</sup>	4.3	99%	14.6	Dec-01	28	0	37.9	Dec-01 18:00	-	-

SAAQS: Saskatchewan Ambient Air Quality Standards





Parameters	Unit	Color Code for Wind Speed and Pollution Concentration Class					
		$0.3 \leq WS < 1.4$	$1.4 \leq WS < 3.1$	$3.1 \leq WS < 7.8$	$7.8 \leq WS < 10.8$	$10.8 \leq WS < 13.6$	$WS \geq 13.6$
SO <sub>2</sub>	ppb	$0 \leq C < 1$	$1 \leq C < 5$	$5 \leq C < 10$	$10 \leq C < 57$	$57 \leq C < 172$	$C \geq 172$
NO <sub>2</sub>	ppb	$0 \leq C < 5$	$5 \leq C < 15$	$15 \leq C < 30$	$30 \leq C < 100$	$100 \leq C < 212$	$C \geq 212$
O <sub>3</sub>	ppb	$0 \leq C < 10$	$10 \leq C < 20$	$20 \leq C < 40$	$40 \leq C < 60$	$60 \leq C < 82$	$C \geq 82$
PM <sub>2.5</sub>	$\mu\text{g}/\text{m}^3$	$0 \leq C < 2$	$2 \leq C < 4$	$4 \leq C < 10$	$10 \leq C < 20$	$20 \leq C < 30$	$C \geq 30$

**Monthly Update**

- Achieved >99% of scheduled uptime for all parameters
- Downtime due to routine maintenance and daily Internal Zeroes and Spans
- Calibration performed December 3
- All compliance parameters are above 90% data validity